

THE 18<sup>th</sup> EAST EURASIA INTERNATIONAL WORKSHOP  
EEIW 2024

*Present Earth Surface Processes and Long-term Environmental Changes  
in East Eurasia*

**October 7–11, 2024, Matsue, Japan**

**(FINAL CIRCULAR)**



Estuary Research Center, Shimane University



---

## 1. Outline

The purpose of this workshop is to exchange modern and historical environmental information in the East Asia region related to the "Present Earth Surface Processes and Long-term Environmental Changes in East Eurasia" for a better understanding of the Earth's landscape and climate evolution.

The first International Workshop on Present Earth Surface Processes and Long-term Environmental Changes in East Eurasia was held in Daejeon, Korea (2004), followed by Kanazawa, Japan (2005), Seoul, Korea (2006), Nanjing, China (2007), Hakodate, Japan (2008), Taipei, Taiwan (2009), Jeju Island, Korea (2010), Chengdu, China (2011), Kobe, Japan (2012), Kwangju, Korea (2013), Nanjing, China (2014), Taipei, Taiwan (2015), Okinawa, Japan (2016), Novosibirsk, Russia (2017), Busan, Korea (2018), Ulaanbaatar, Mongolia (2019), and after Covid-19, Kunming, China (2023).

The 18<sup>th</sup> East Eurasia International Workshop (EEIW) will be held on October 7–11, 2024 in Matsue, Japan. The objective of the EEIW 2024 is to present recent research on Earth-surface processes and long-term environmental changes in terrestrial and coastal regions and to promote information exchange, collaborative research, and research networking in the East Eurasia and Western Pacific regions.

## 2. Main Topics:

- ☐ Paleoecology, paleolimnology and paleoenvironment
- ☐ Modern lake catchment processes: Observations and measurements
- ☐ Modern deltaic, estuarine, and coastal processes and associated environmental changes
- ☐ The interaction of natural and anthropogenic environmental change
- ☐ Natural hazards
- ☐ Global and regional environmental change during the Holocene and the Anthropocene
- ☐ Modeling and prediction of environmental change

## 3. Organizations

### Hosted and Organized by:

- ❖ Estuary Research Center (EsReC), Shimane University, Japan
- ❖ International Organizing Committee of EEIW

### Co-Organized by:

- ❖ Nanjing Institute of Geography and Limnology, Chinese Academy of Science
- ❖ Institute of Geology, Mongolian Academy of Science
- ❖ Korea Institute of Geoscience and Mineral Resources (KIGAM)
- ❖ Institute of Natural and Environmental Technology, Kanazawa University
- ❖ Southwest Jiaotong University
- ❖ Department of Geography, National Taiwan University
- ❖ Japan National Committee on International Union for Quaternary Research (INQUA), Science Council of Japan (SCJ)

### Supported by:

- ❖ International Association of Geomorphologists
- ❖ Japan National Committee on International Association of Geomorphologists, SCJ

---

### Local Organizing Committee:

#### **Chairperson:**

Prof. Dr. Yoshiki Saito (EsReC) Email: ysaito@soc.shimane-u.ac.jp

#### **Secretaries:**

Assoc. Prof. Dr. Kota Katsuki (EsReC) Email: kkota@soc.shimane-u.ac.jp

Assist. Prof. Dr. Yasuhide Nakamura (EsReC) Email: jasnakamura@soc.shimane-u.ac.jp

#### **Members:**

Prof. Dr. Hiroshi Yajima (EsReC)

Assoc. Prof. Dr. Koji Seto (EsReC)

### 4. Schedule:

#### **October 7, 2024, Monday: Arrival in Matsue, Accommodation, and Registration**

17:00 - Opening Registration (Lobby at Matsue Excel Hotel Tokyu)

19:00 - 21:00 Ice-Breaker Party (Second Floor, Matsue Excel Hotel Tokyu)

#### **October 8, 2024, Tuesday: Kunibiki Messe**

09:00 - Registration

09:20 - Opening Ceremony

09:30 - Plenary Session (O-1 to O-4 & O-5 to O-8)

12:20 - Lunch break with short poster talk, and poster viewing (P-1 to P-21)

14:10 - Plenary Sessions (O-9 to O-13 & O-14 to O-18)

19:00 - Banquet (restaurant “Robata KABA: Matsue Ekimae”かば)

#### **October 9, 2024, Wednesday: Kunibiki Messe**

09:00 - 12:30 Plenary Session (O-19 to O-23 & O-24 to O-28)

13:30 - **Field excursion 1** (Lunch & Boat Tour on Lake Shinji)

18:30 - Dinner (seafood restaurant “Kaisen-donya Hakata”海鮮問屋博多)

#### **October 10, 2024, Thursday: Field excursion 2 (bus tour)**

08:00 - 20:00

4000-year-old buried forest: Sanbe Azukihara Buried Forest Museum

11:15-12:15 Lunch at “Kanko Center Izumo”

Izumo Shrine, & Shimane Museum of Ancient Izumo

17:17-19:15 Dinner at Shimane Winery (BBQ)

#### **October 11, 2024, Friday: Departure**

### 5. Registration Fees:

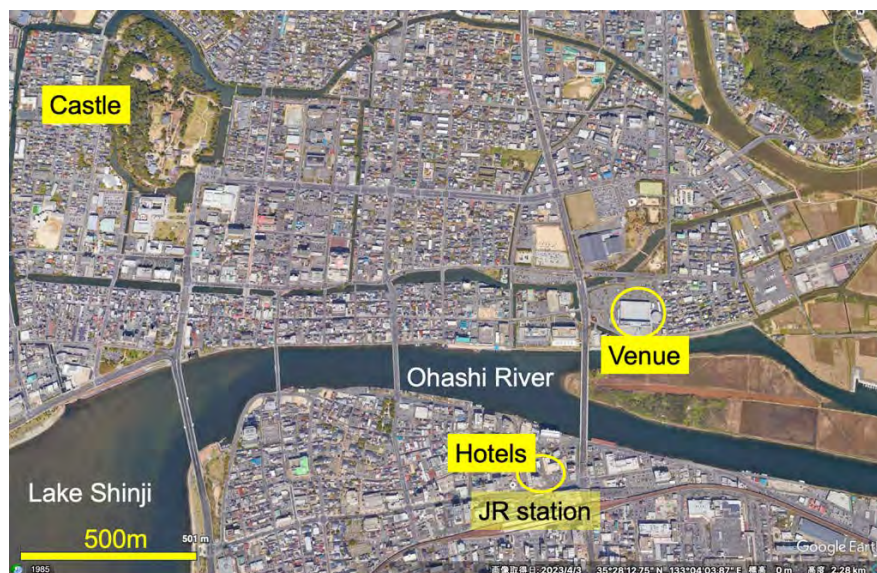
- **The workshop fee** is 15,000 J Yen (~95 US\$) for each participant, including registration, ice-breaker party, lunch (1), banquet (1), and workshop materials, excluding accommodation.
- **The excursion fee** is 25,000 J Yen (~160 US\$) for each participant, including 1.5-day trips, tickets, lunch (2), and dinner (2), excluding accommodation.
- **Full participation fee (workshop and excursion)** is 40,000 J Yen
- The student fees are 5,000 J Yen for the workshop and 15,000 J Yen for the excursion.
- **Registration fees should be paid in Japanese Yen in cash at the registration desk.**

## 6. Registration and Ice Breaker

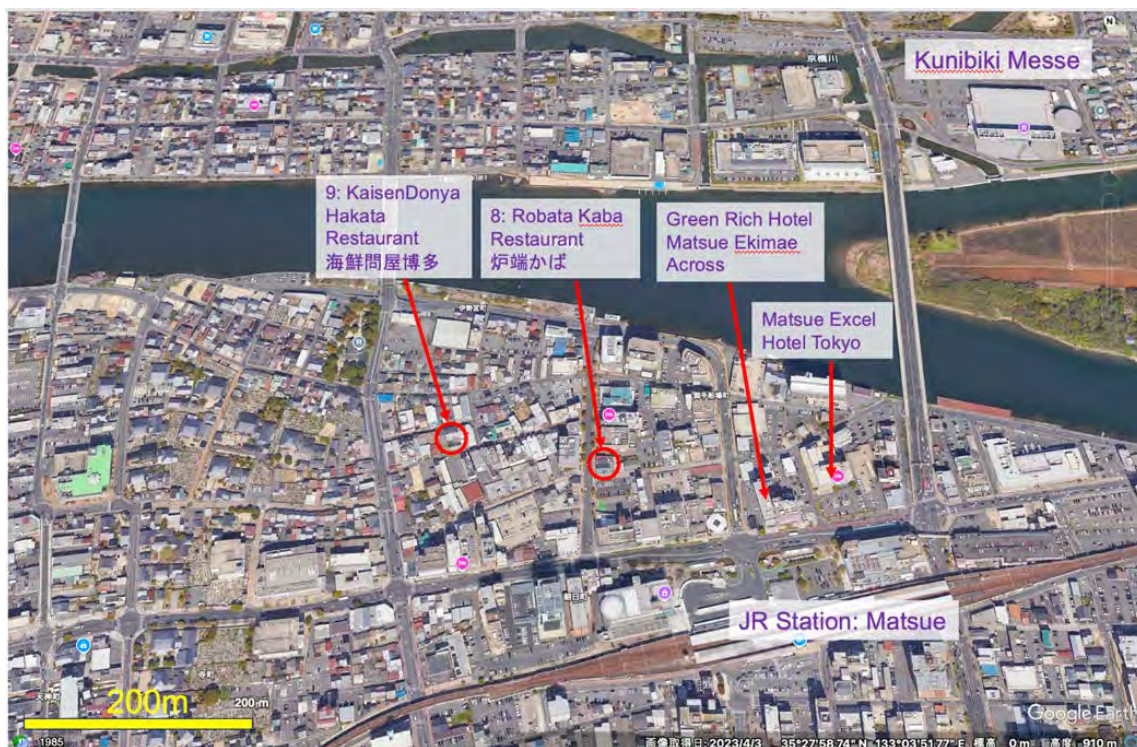
The registration desk will be open in the lobby of the Matsue Excel Hotel Tokyu from 5:00 pm to 7:00 pm on October 7, followed by the registration desk in the Ice Breaker room on the second floor. The Ice Breaker will be open from 7 pm to 9 pm on the second floor. Light refreshments will be served in the Ice Breaker.

The registration desk will also be open at the meeting site, the small hall of the Kunibiki Messe, from 9 am on October 8.

## 7. Maps for Shimane Prefecture, Matsue City, and the workshop venue.



*City center of Matsue City*



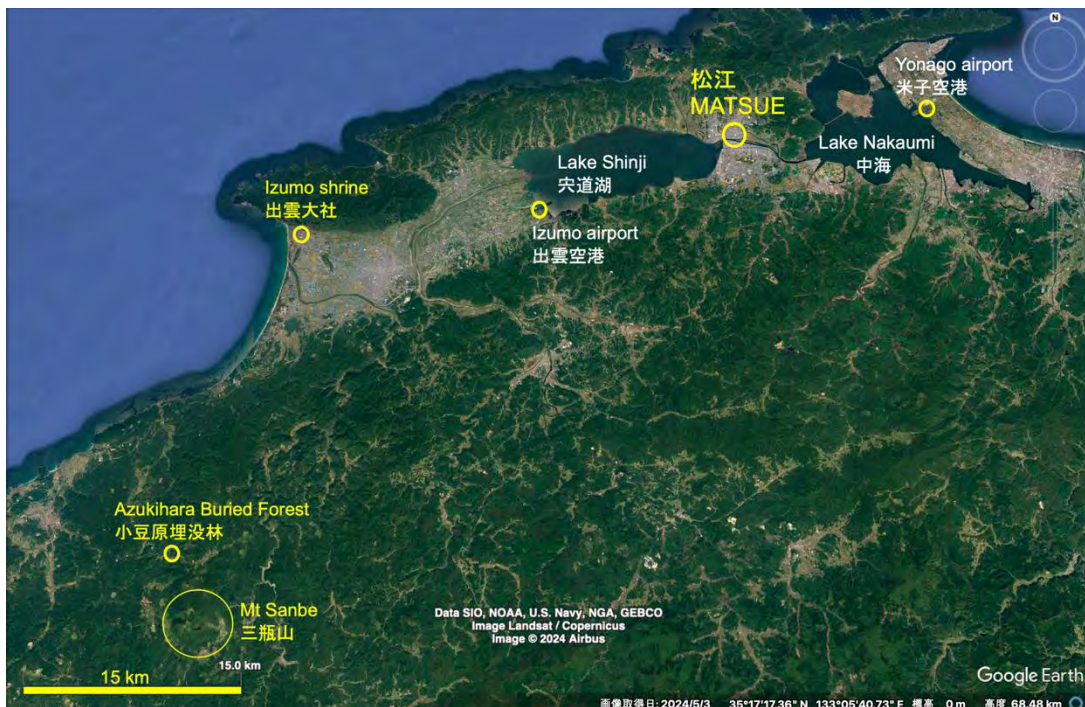
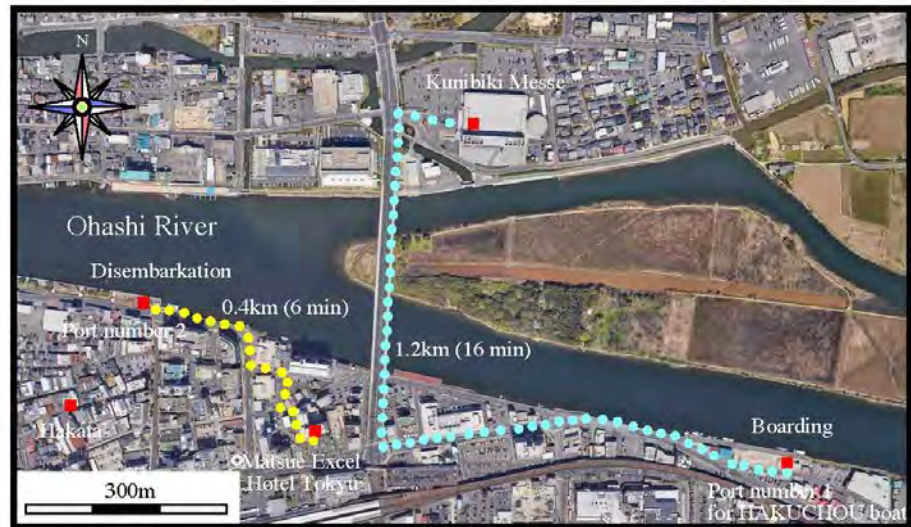
### *Workshop Venue*

EEIW 2024 will be held in the Small Hall of Kunibiki Messe (Shimane Prefectural Convention Center), which is the primary convention facility in Shimane Prefecture. The venue is only 700 meters away from JR Matsue Station and major hotels. (<https://www.kunibikimesse.jp/en/>)

## 8. Excursion sites

### Excursion 1: A half day boat tour on Lake Shinji.

Lake Shinji and Lake Nakaumi are connected brackish lakes that form an estuary. The two lakes are connected by the Ohashi River flowing through Matsue City.



---

## Excursion 2: Sanbe-Azukiara Buried Forest Museum and Shimane Museum of Ancient Izumo

**Mount Sanbe** is located in Oda City, Shimane Prefecture, near the northern shore of western Japan. It is a volcano, 1,126 meters above sea level, which is now covered with dense forest. Major eruptions occurred approximately 5,500 and 4,000 years ago. Ejected lava, rock, and tephra traveled down the mountain and spread over the surrounding lands, resulting in the burial of a forest in the Azukihara Valley 4000 years ago.

The Sanbe-Azukiara Buried Forest Museum presents this hidden forest, where many giant trees were buried. It also paints a picture of the local environment and climate 4000 years ago.

In the underground exhibition hall of the **Sanbe-Azukiara Buried Forest Museum**, you can see giant tree trunks standing upright as they were in ancient times, and others lying in situ after they were felled by volcanoclastic debris flows derived from the eruption.  
([https://www.nature-sanbe.jp/buried\\_forest/](https://www.nature-sanbe.jp/buried_forest/))



The **Shimane Museum of Ancient Izumo** preserves and displays an extensive collection of artifacts related to the history of Shimane Prefecture - particularly the region known as Izumo. Often referred to as the "land of the gods," Izumo is one of three former provinces that make up modern-day Shimane. Izumo features prominently in some of Japan's earliest written chronicles, and the region holds considerable significance in the mythology and early political history of Japan.  
(<https://www.izm.ed.jp/english/>)

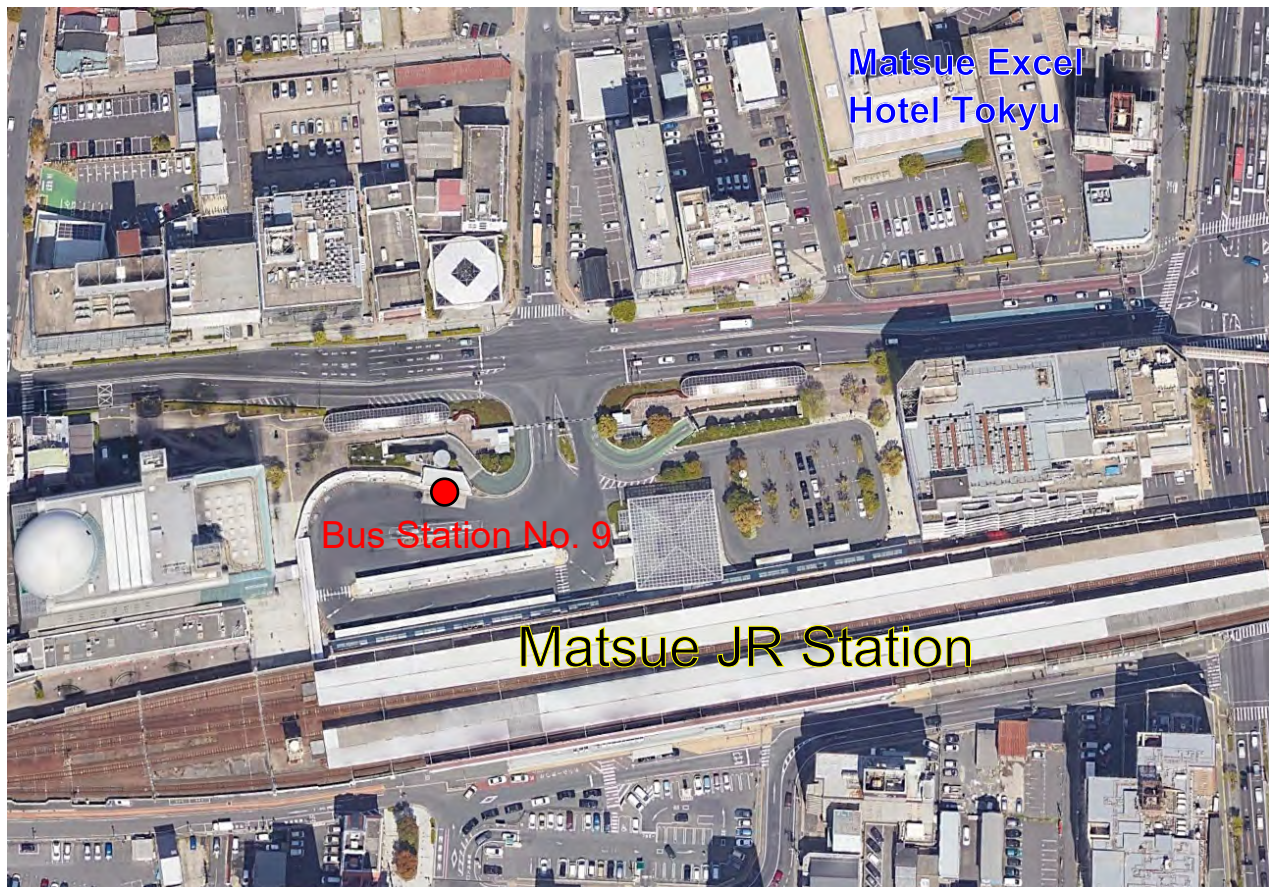
**Shimane Winery for dinner**  
(<https://www.shimane-winery.jp/wp/wp-content/themes/winery/pdf/english-2.pdf>)

## 9. Access from/to the Airport: Airport Information

There are no banks (currency exchange offices) at Izumo and Yonago airports. ATMs are available and cash advances are available at convenience stores (Seven-Eleven, Family Mart & Lawson). Public bus services are available from Izumo - Airport to Matsue Station, Izumo-Shi Station, Izumo Taisha Shrine, and Tamatsukuri Onsen Hot Springs, and from Yonago Airport to Matsue Station and Yonago Station. The fares to Matsue Station are 1,050 yen for Izumo Airport and 1,000 yen for Yonago Airport. The journey time is approximately 35 and 45 minutes respectively. The bus service is timed to coincide with the arrival and departure of airplanes. Only CASH is accepted. Bus tickets can be purchased on the bus.

We will pick you up from the airport to the hotel for those who show the arrival flight schedule.

# Airport Bus Information



Station No. 9 is the bus station for the airports (Izumo and Yonago).

## Time Table

### From Matsue St. to Izumo Airport

Matsue St.	Izumo Airport	Izumo Airport		
Departure	Arrival time	Flight time	Flight code	For
6:15	6:50	7:50	JAL276	Tokyo
7:00	7:35	8:30	JAL2342	Osaka
7:30	8:05	9:15	JAL278	Tokyo
7:30	8:05	9:15	FDA412(JAL4431)	Nagoya
9:25	10:00	11:00	JAL3550	Fukuoka
10:05	10:40	11:40	JAL280	Tokyo
11:10	11:45	12:35	JAL2346	Osaka
13:25	14:00	15:00	FDA186(JAL3299)	Nagoya
14:10	14:45	15:45	JAL2356	Osaka
14:40	15:15	16:25	JAL284	Tokyo
14:55	15:30	16:30	FDA916(JAL3298)	Nagoya
16:45	17:20	18:20	FDA418(JAL4437)	Nagoya
17:20	17:55	19:00	JAL2358	Osaka
17:45	18:20	19:15	JAL3554	Fukuoka
17:50	18:25	19:25	JAL286	Tokyo

Price: 1,050 J Yen

### From Matsue St. to Yonago Airport

Matsue St.	Yonago Airport	Yonago Airport		
Departure	Arrival time	Flight time	Flight cod	For
5:55	6:40	7:25	ANA382	Tokyo
7:20	8:05	8:55	ANA384	Tokyo
9:40	10:25	11:10	ANA386	Tokyo
13:15	14:00	14:45	ANA1088	Tokyo
		15:50	RS746	Seoul
16:10	16:55	17:40	ANA388	Tokyo
18:50	19:35	20:20	ANA390	Tokyo

Price: 1,000 J Yen

For those with international flights,  
it is recommended to arrive at the airport earlier.

### Caution!

You don't need to buy a ticket.  
You can pay when you get on the bus.  
However, **Only in Cash.**

---

## 10. Presentations & Abstract:

The workshop consists of oral and poster sessions and excursions (field trips). The official language for all presentations will be English. Abstracts are required from all participants wishing to submit a poster or oral presentation to the workshop. Accepted abstracts will be published in the workshop program, which will be distributed to all participants. Abstracts can be submitted by e-mail to the following address: [eeiw2024@gmail.com](mailto:eeiw2024@gmail.com)

- **Oral Presentation:** 15-minute presentations and 3-minute discussions.
- **Poster Presentation:** Posters should be written in English. The size of the poster paper is width-90 cm x height-120 cm. A 2-minute oral presentation is available during lunch on Day 1 using one slide.

**The abstract book is available at URL:**

**[https://www.esrec.shimane-u.ac.jp/\\_files/00361163/EEIW2024\\_Abstractbook.pdf](https://www.esrec.shimane-u.ac.jp/_files/00361163/EEIW2024_Abstractbook.pdf)**

## 11. Contact Information:

***Please Send Registration Form & Abstract to:*** [eeiw2024@gmail.com](mailto:eeiw2024@gmail.com)

***Phone:*** +81(0)852-32-9812

***Website:*** <https://www.esrec.shimane-u.ac.jp/eng/doc/2024022000020/>

**The 18th East Eurasia International Workshop (EEIW 2024)**  
**Present Earth Surface Processes and Long-term Environmental Changes in East Eurasia**  
**Program of Scientific Sessions on October 8 to 9, 2024**

ver.20241003

	Title	Authors
<b>Day 1: October 8 (Tuesday)</b>		
	920 Opening address	Yoshiki SAITO
O-1	930 Reconstruction of Late Pleistocene glaciation at Turgen and Kharkhiraa mountain system in NW Mongolia	Krивonogov Sergei
O-2	950 Last transgression of Issyk-Kul Lake, Kyrgyzstan	Krивonogov Sergei, Maltsev Anton, Kolchenko Valerii, Menshikov Maxim, and Sankova Valentina
O-3	1010 Statistics and comparison of ancient and modern glaciers in Gongga Mountain area, Hengduan Mountains, Sichuan, China	Lyu Yudong and Krивonogov Sergei
O-4	1030 The appearance of early humans in Jeongok-ri, Korea	Jin Cheul Kim, Jieun Kwon, Sei Sun Hong, Choi Ire, Hoil Lee, Tae Ho Lee, Seungwon Shin, Jin-Young Lee, and Han Woo Choi
Coffee Break 10 min		
O-5	1100 Application study of environmental magnetism on a paleosol-bearing sequence of Paleolithic site in the central Korean Peninsula	Hyeon-Seon Ahn, Sujeong Park, and Jaesoo Lim
O-6	1120 High-Resolution Late Quaternary Manganese Chemostratigraphy Using XRF (X-ray fluorescence) Scanning Data of Shallow Marine Sediments in the Southwestern Taiwan	Kuo-Yen WEI, Li LO, and Xiang-Yu YANG
O-7	1140 Holocene sea-level changes in Japan coastal areas recovered from the brackish lake sediment cores based on physical properties and geochemical analysis	Fumiko Watanabe NARA, Fukuka KIDA, Shinya OCHIAI, Takahiro WATANABE, Tetsuya MATSUNAKA, Kotaro HASHINO, Shin-ichi YAMASAKI, and Noriyoshi TSUCHIYA
O-8	1200 Determination of sedimentary characteristics of Holocene estuarine fills using micro-XRF data: A case study from the Izumo Plain, Shimane Prefecture, Japan	Aan DIANTO, Kota KATSUKI, Koji SETO, Tetsuya SAKAI, Toshimichi NAKANISHI, and Yoshiki SAITO
Lunch Break with Poster Short Talk (2 min each with one slide)		
Poster Viewing		
O-9	1410 Holocene millennial-scale variations of <i>Neogloboquadrina pachyderma</i> (planktonic foraminifera) in the southeast coastal areas of Korea and its implication to paleoclimatic changes in the East Asian margin	Hiroyuki Takata, Jong-Hwa Chun, Daekyo Cheong, and Boo-Keun Khim
O-10	1430 Hydroclimatic Changes on Jeju Island, South Korea during the Holocene: Focusing on the 4.2 ka Event	Ara CHO, and Chang-Pyo Jun
O-11	1450 Decoupling warming and monsoon precipitation over the last 3110 years in northwestern Yunnan Province, southwestern China	Baoyan Jia, Xiayun Xiao, Changting Chi, Rui Ke, and Yanling Li
O-12	1510 Sea surface temperature reconstruction at Shushi bay, Tsushima island during the last 3ka	Sujeong Park, Sujin Kang, Kyung-Hoon Shin, Kota Katsuki, Jaesoo Lim and Toshiaki Irizuki
O-13	1530 Hydroclimate changes in Tsushima Island, Japan during the past 3000 years	Jaesoo Lim, Kota Katsuki, Sujeong Park and Toshiaki Irizuki
Coffee Break 10 min		
O-14	1600 High Aeolian Particle Fluxes but Low Rainfall in Taiwan Related to Drastic Population Declines in China over the Past 2,600 yrs	Chen-Tung Arthur CHEN and Jiann-Yuh LOU
O-15	1620 Reconstruction of environmental and flooding histories since AD1250 at three annually laminated lakes in the Central Finland presumed by diatom assemblages	Kaoru Kashima, Yu Fukumoto and Timo Saarinen
O-16	1640 A 200-year hydrological and environmental record from sediment biomarkers of Lake Balkhash, arid Central Asia	Jinglu Wu, Hongliang Zhang, and Ru Guo
O-17	1700 Modern vegetation-climate relationships for pollen assemblages across the mountainous regions of southwestern China: Implications for palaeoenvironmental reconstruction	Changting Chi, Xiayun Xiao, and Baoyan Jia
O-18	1720 Environment and distribution of archaeological sites in the Red River Delta during the Holocene	Thi Mai Huong NGUYEN, Yasuyuki YOSHIDA, and Mariko YAMAGATA
<b>Conference Dinner at ""KABA" restaurant</b>		

**Day 2: October 9 (Wednesday)**

O-19	900	Boosting riverine sediment by artificial flood in the Yellow River and the implication for delta restoration	Xiao WU, Houjie WANG, Yoshiki SAITO, Jaia SYVITSKI, Naishuang BI, and Zuosheng YANG
O-20	920	Chronology constraints on the late Quaternary complex sedimentary history of the Pear River delta	Lei Gao, Jinpeng Zhang, Aiming Zhang, and Hao Long
O-21	940	Past flood events inferred from atmospheric radionuclides and physical properties of West Nanao Bay sediments	Shinya OCHIAI, Hideo SAKAI, Mikiya TSURUOKA, and Seiya NAGAO
O-22	1000	Effects of global warming on an ice-covered mountainous lake, Akaga-Onuma, in Japan	Seiya NAGAO, Shinji OTORI, Takashi AKUTSU, Kanako SHIOZAWA, Kyuma SUZUKI, Ryo SUGIMOTO, Sumito MATOBA, and Keisuke FUKUSHI
O-23	1020	Lacustrine sediment information and estimation of erosional force	Kenji KASHIWAYA
Coffee Break 10 min			
O-24	1050	Impacts of Mt. Fuji eruption on the diatom assemblages of Lake Kawaguchi	Kota KATSUKI, Shinya YAMAMOTO, Hiromi INUI, Ryuji TADA, Toshihiro TADA, Kenta SUZUKI, Katsura YAMADA, Akira BABA, Ryoma Hayashi, and Nobuko Kametani
O-25	1110	Slope stability on the northern coast of Taiwan: cases around Keelung and Hoping islands	J.C. Lin and Y.C. Chen
O-26	1130	Recognizing landfills as geological strata	Wook-Hyun NAHM
O-27	1150	Numerical experiments of turbidity currents generated by 2011 Tohoku-oki Earthquake and tsunami	Hajime NARUSE and CAI Zhirong
O-28	1210	Tsunami behavior inferred from widespread tsunami deposits in Noto Town by the 2024 Noto Peninsula earthquake	Masaki YAMADA, Hajime NARUSE, Daisuke ISHIMURA Ryo NAKANISHI, Katsuya MAEHASHI, and Yoshiaki KIYOZUKA

## Posters

- |      |   |   |
|------|---|---|
| P-1  | Accurate restoration of marine primary productivity using maleimide analysis for highly aged T-OAE sediments  | Kosuke Kawabata, Masayuki Ikeda, Akihiro Kano, Megumu Fujibayashi, Ryoko Senda, and Ryosuke Saito   |
| P-2  | Magnetostratigraphy, rock magnetic signatures and eolian dusts of reef limestones from Miyako-jima Island   | Hirokuni ODA, Chisato ANAI, Naotomo KANEKO, Naoto FUKUYO, and Takashi ITOH  |
| P-3  | Quantitative pollen-based paleoclimate reconstructions for the past 18.5 ka in southwestern Yunnan Province, China  | Xiayun Xiao, Yan Zhao, Changting Chi, Zhuo Zheng, Chunmei Ma, Chen Liang, Limi Mao, and Aubrey Hillman  |
| P-4  | Paleoenvironment and paleobiogeography based on fossil bay ostracods (minute Crustacea) from the Upper Pleistocene and Holocene sequences in Ise Bay, central Japan | Toshiaki IRIZUKI and Atsuko AMANO   |
| P-5  | Holocene Environmental Change in Lake Shinji Basin Inferred from Variations in Magnetic Properties of the Sediment Cores on the West Shore                          | Akira HAYASHIDA, Mizuki KAMEI, Yoshiki SAITO, Koji SETO, Kota KATSUKI and Toshimichi NAKANISHI  |
| P-6  | Diatom-based lacustrine paleoenvironment reconstruction affected by tsunamis about the last 900 years in Lake Harutori, Hokkaido                                    | Yuka MATSUNO, Kota KATSUKI, Futoshi NANAYAMA, Toshimichi NAKANISHI, Keita FUKATSU, Keisuke SAKAI, Naoto FUKUYO, and Hirokuni ODA                                    |
| P-7  | Recent ostracod assemblage (minute Crustacea) and environment in Lake Nakaumi, southwestern Japan, and their spatiotemporal changes over the past 60 year           | Aki ISHIGAKI, Toshiaki IRIZUKI, Koji SETO, Mika SHIMAIKE and Akira TSUJIMOTO  |
| P-8  | Estimating carbon storage in eutrophic lakes in subarctic regions using Anthropocene varved sediments   | Koji SETO, Kota KATSUKI, Takeshi SONODA, Akira TSUJIMOTO, Yasuhide NAKAMURA and Takuto ANDO   |
| P-9  | Expansion of tropical larger foraminifera <i>Amphistegina</i> in the Japan Sea owing to the recent warming trend of SST   | Hiroki HAYASHI  |
| P-10 | The erosion rate in Gobi Altai Mountain, the catchment of Boon Tsagaan Lake, Mongolia   | Noriko Hasebe, Shuukaaz Ganbat, Zhe Shi, Uyangaa Udaanjargal, Baasansuren Gankhurel, Altansukh Nyamdorj, Shinya Ochiai, Davaadorj Davaasuren, and Keisuke Fukushima |
| P-11 | Fundamental Research on Foraminifera as Dosimeters in Thermoluminescence dating   | Eiji Ueyama, Noriko Hasebe, Takuya Sagawa   |
| P-12 | Subsidence potential of Izumo clay as a result of sediment consolidation  | Anjila Babu MALLA, Tetsuya SAKAI, and Toshihide SHIBI   |
| P-13 | Sedimentary facies and successions at the delta margin of the Kiso River delta  | Kazuaki HORI, Toshimichi NAKANISHI, and Wan HONG  |
| P-14 | Interpretation of sedimentary facies from late Quaternary to present: a multi-proxy analysis of sediment in the western coastal plain of Bohai Bay, China           | Qinwei KANG, Kazuaki HORI and Fu WANG   |
| P-15 | Characteristics of grain size distribution of river flooding sediments in midstream area of the Nakdong River   | Min Han, Dong-Yoon YANG, Jaesoo LIM, Wook-Hyun NAHM   |
| P-16 | Tidal controls on migration of intertidal sand ridges? An example from Hamhae Bay tidal flat, southwestern Korea  | Tae Soo CHANG   |
| P-17 | Holocene paleoclimate changes and agricultural activities based on the phytolith records in Lake Gyeongpo, South Korea  | Hyoseon KIM, Soon-Ock YOON, and Sangill HWANG   |
| P-18 | Late Quaternary Vegetation and Paleoenvironmental Changes based Pollen records in the Korean Peninsula  | Hye-Ryung Kim, Soon-Ock Yoon, and Sangill Hwang   |
| P-19 | Reconstructing paleoenvironmental changes in Southeastern Mongolia from the Late Pleistocene to Holocene using the paleo-lake sediments                             | Su-min KANG-, Altansukh OCHIR, and Yukiya TANAKA  |
| P-20 | Late Holocene hydroclimate variability recorded in Yongho paleolake in central South Korea  | Arum JUNG, Jaesoo LIM, and Sujeong PARK   |